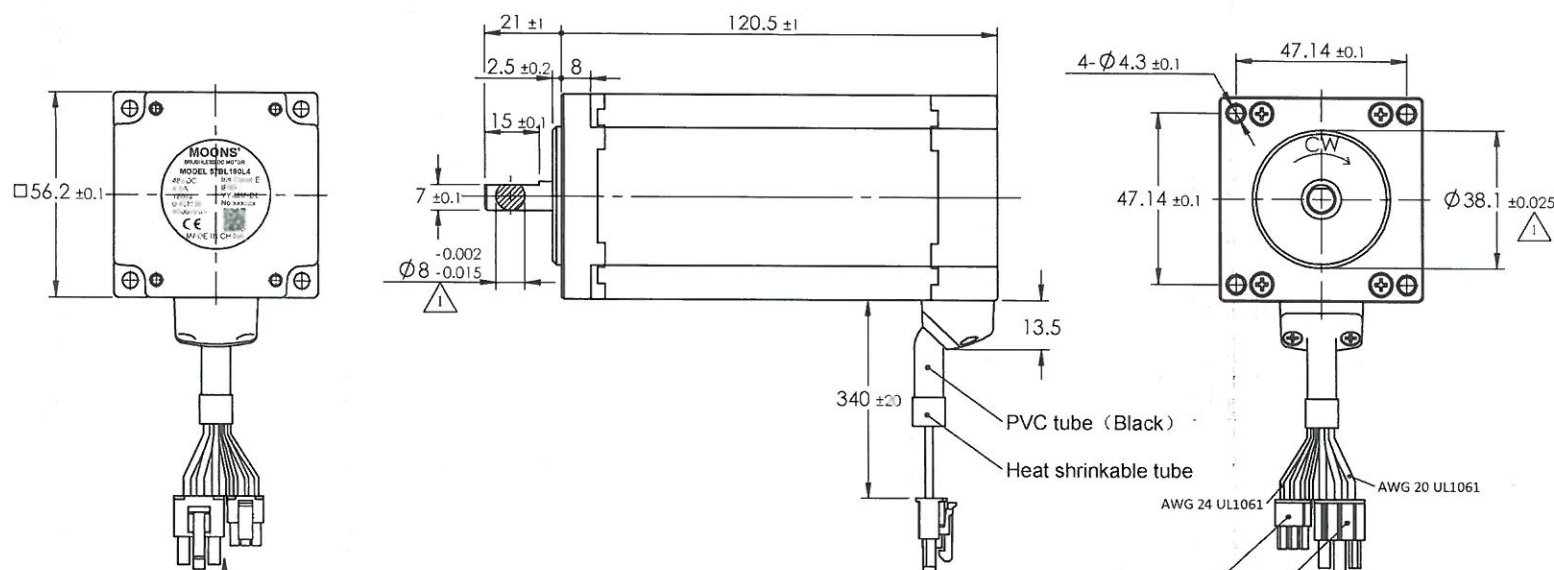
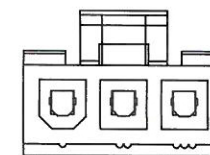


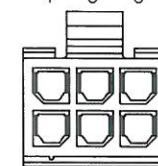
4611130000022



P向 MOLEX 39-01-4031

1 2 3  
BLU ORN YEL

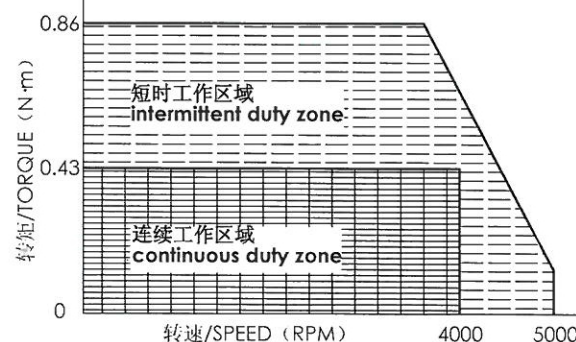
编号 No.	线色 COLOR	定义 FUNCTION
1	蓝/blue	W
2	橙/orange	U
3	黄/yellow	V

P向 MOLEX 43025-0600  
BLU BLK ORN  
4 5 61 3  
RED YEL

编号 No.	线色 COLOR	定义 FUNCTION
1	红/red	VCC(+5V)
3	黄/yellow	Hv
4	蓝/blue	Hw
5	黑/black	GND
6	橙/orange	Hu

规格  
Specifications

1	额定电压/Rated power supply	48	VDC
2	额定输出功率/Rated output power	180	W
3	极数/Poles number	8	
4	相数/Phase number	3	
5	额定转速/Rated rotational speed	4000	RPM
6	最大转速/Maximum speed	5000	RPM
7	额定转矩/Rated torque	0.43	N·m
8	额定电流/Rated winding current	4.5	A
9	反电势系数/Voltage constant ±10%	6.45	Vrms/krpm
10	惯量/Moment of inertia	4.5647x10 <sup>-5</sup>	kg·m <sup>2</sup>
11	线电阻Ph/ph resistance ±10% at 20°C	0.44	Ω
12	线电感Ph/ph inductance ±30% at 1KHz 20°C	0.54	mH
13	电机质量/Motor mass	1.7	kg
14	绝缘等级/Insulation class	E	120°C
15	防护等级/Protective enclosure rating	IP40	

转矩-转速特性  
Torque-speed specifications

Unit: mm

第一角画法

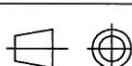
FIRST ANGLE METHOD

未注线性与角度尺寸公差  
Tolerances for linear and angle dimensions without  
individual tolerance indications

GB/T 1804-m eqv ISO 2768-1 : m

未注形位公差尺寸公差  
Geometrical tolerance for features without  
individual tolerance indications

GB/T 1184-K eqv ISO 2768-2 : K



批准 Approve

标准化 Standard

工艺 Technology

审核 Check

设计 Design

NAMES

SIGNATURE

DATE

MOONS'

Shanghai Moons' Electric Co., Ltd.

This document is released for information only. Its reproduction in whole or in part or its dissemination to third parties is prohibited. All trademarks and registered trademarks appearing on this document are the property of their respective owners.

Type: 57BL180L4 1 Rev. C SCALE 1:2 Sheet 1 of 1

G		
F		
E		
D		
C	轴φ8 0/-0.006; 凸台 φ38.1 0/-0.025; 电流5.8A; 功率200W	2013-05-17
B	规格变更	2012-12-14
A	原始版本 Original revision	2012-11-29
REV.	版本记录 REVISION RECORD	DATE

UNLESS OTHERWISE SPECIFIED